

HiEPRO SOLICITATION NO. B24001821
 JOB NO. MA24-03
 KAHULUI SBH PREFABRICATED BATHROOM &
 WASTEWATER SYSTEM
 PREFABRICATED BATHROOM DRAWINGS
 ADDENDUM NO. 2, MARCH 25, 2024

MODULAR BATHROOM UNIT FOR REMOTE LOCATIONS

SHOP DRAWINGS

DOORS

Material: ANSI 250.8.3 Exterior grade fire-rated 1 hour honeycomb core doors, 1 3/4" thickness, 18 ga galvanized faces, elastomeric paint, UL listed. 36"W x 7'H flush face, with door closer reinforcement.

Door Prep: cylindrical bored latch + deadbolt

Frames: Custom 0.083" thickness welded tubular steel 4 sides, galvanized, elastomeric paint.

Hinges: 1 1/2 pair 4 1/2" x 4 1/2" full mortise, ANSI 5111, US32D finish.

Passage Latches: Lever style, cylindrical passage latchset, ANSI F75, US32D finish

Thresholds: low profile anodized aluminum, ADA accessible, ANSI A117.1

Closers: ANSI/BHMA A156.4 Grade 1 certified: Norton 410 series, 689 finish

LOUVERS

Material: 4"x 0.080" extruded aluminum, mill finish, shop painted, self draining, 24"W x 20"H

AMCA Std 500-L weather rated

FLOORING

Material: Epoxy Floor coating, sand broadcast finish

Subfloor: 1 1/8" plywood subfloor

WALL FINISH: FRP Marlite, color Ivory

WALL FRAMING:

3 5/8" framing: 18 GA CEE studs at 16" O.C.

1 5/8" furring: 22 GA CEE furring channels @ 16" O.C.

NOTES

1. ALL WORK SHALL CONFORM WITH THE HAWAII STATE BUILDING CODE, MOST RECENT ADOPTION, AND THE APPLICABLE PROVISIONS OF THE INTERNATIONAL BUILDING CODE, 2006 ED.

2. ELECTRICAL COMPONENTS, EQUIPMENT AND SYSTEMS SHALL BE DESIGNED AND CONSTRUCTED IN ACCORDANCE WITH THE PROVISIONS OF THE NATIONAL ELECTRICAL CODE, NFPA 70, AND THE STATE FIRE CODE.

3. IN ACCORDANCE WITH THE NATIONAL ELECTRIC CODE, THESE STRUCTURES WILL NOT BE DESIGNED TO MEET THE REQUIREMENTS OF A DWELLING BECAUSE THEY DO NOT INCLUDE PERMANENT PROVISIONS FOR COOKING.

4. PLUMBING SYSTEMS AND EQUIPMENT SHALL BE CONSTRUCTED, INSTALLED, AND MAINTAINED IN ACCORDANCE WITH THE UNIFORM PLUMBING CODE AND ADOPTED AMENDMENTS. PRIVATE SEWAGE DISPOSAL SYSTEMS SHALL CONFORM TO THE INTERNATIONAL PRIVATE SEWAGE DISPOSAL CODE.

5. GENERAL CONTRACTOR TO MATCH EXISTING FINISHES AT ALL EXTERIOR CONDITIONS, MAKING APPROPRIATE REPAIRS AND UPGRADES TO ENSURE WEATHER AND INSECT PROTECTION.

6. WOOD SHALL NOT BE USED IN CONTACT WITH EARTH. ALL WOOD USED THAT CONTACTS CONCRETE SHALL BE CHEMICALLY PRESSURE TREATED FOR ROT PREVENTION IN ACCORDANCE WITH LOCAL REGULATIONS.

7. ANCHORAGE OF UNITS TO FOUNDATIONS SHALL MEET SITE-SPECIFIC REQUIREMENTS NOT LIMITED TO WIND, GRAVITY AND SEISMIC LOADS. REFER TO CIVIL ENGINEERING FOR FOUNDATIONS AND ANCHORAGE REQUIREMENTS AND DETAILS.


DRAWING INDEX

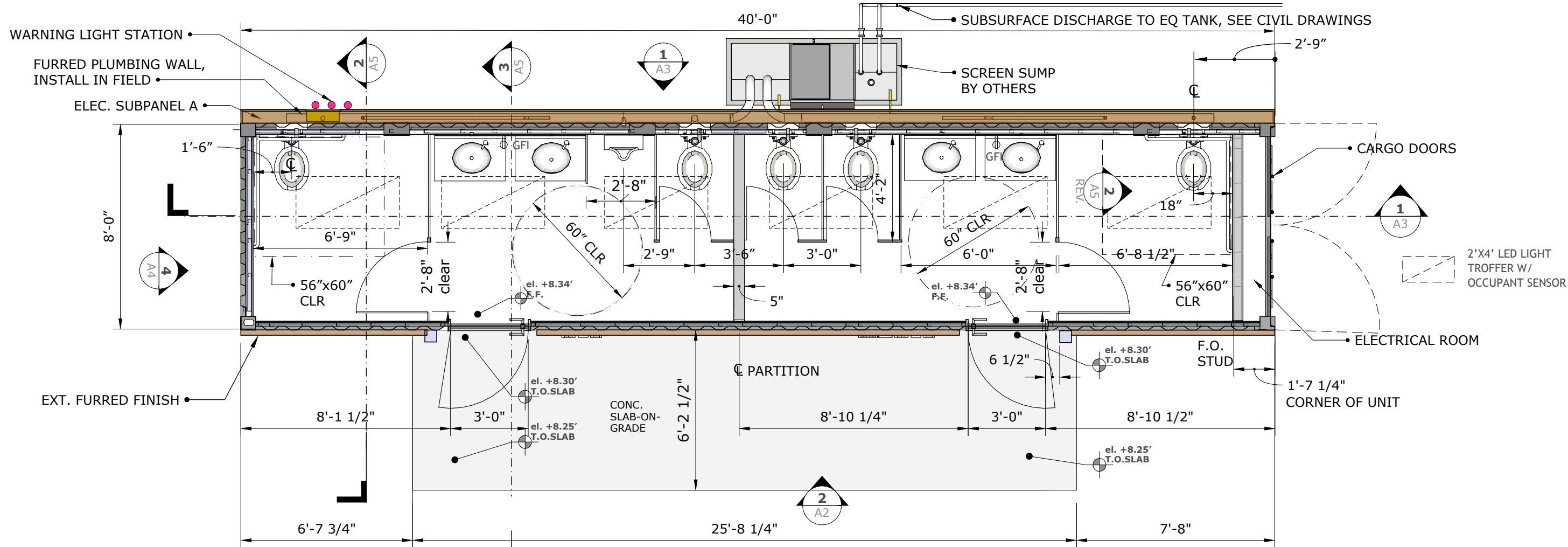
- A1 NOTES
- A2 PLAN, FRONT ELEVATION
- A3 SECTIONS
- A4 REAR ELEV, EXT. FINISHES
- A5 FIXTURES & PLUMBING
- A6 TOILET MOUNTS AND SCUPPERS
- A7 INTERIOR DETAILS
- A8 FIELD MOUNTED COMPONENTS

UNIT SPECIFICATION ENCLOSURE

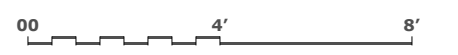
ISO DESIGNATION: ISO 668 - 1AAA
 40 foot high cube
 Length: 40 ft / 12.192 m
 Height: 9' 6" / 2.896 m
 Width: 8 ft / 2.438 m
 Interior length: 39' 4.375" / 11.998 m
 Interior height: 8' 8.5" / 2.655 m
 Interior width: 7' 7.73" / 2.330 m
 Max Gross Wt. 79,370 lbs / 36,000 kg

REVIEWED BY:

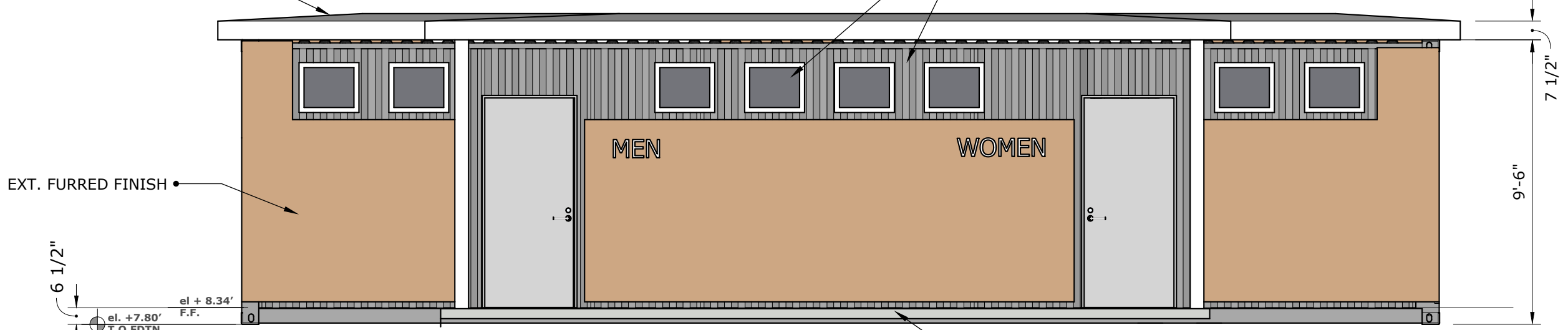
 CONTAINER STORAGE COMPANY OF HAWAII, LTD. 2276 PAHOOUNUI DR. HONOLULU, 96819 (808) 841-5555	DRAWN BY: DSF March 8, 2024	40' MODULAR BATHROOM	SHEET A1 OF 8
	NOTES AND SPECIFICATIONS		



FLOOR PLAN :: 1
scale: 1/4"=1'




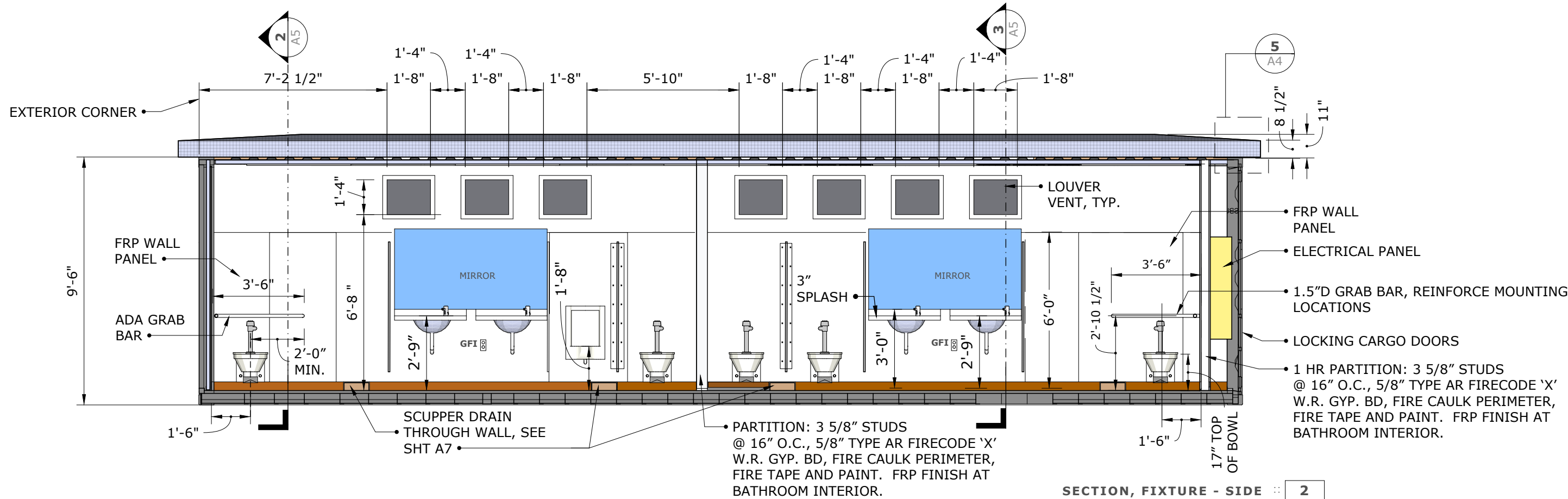
OPTIONAL ROOF:
SEE SHT A8



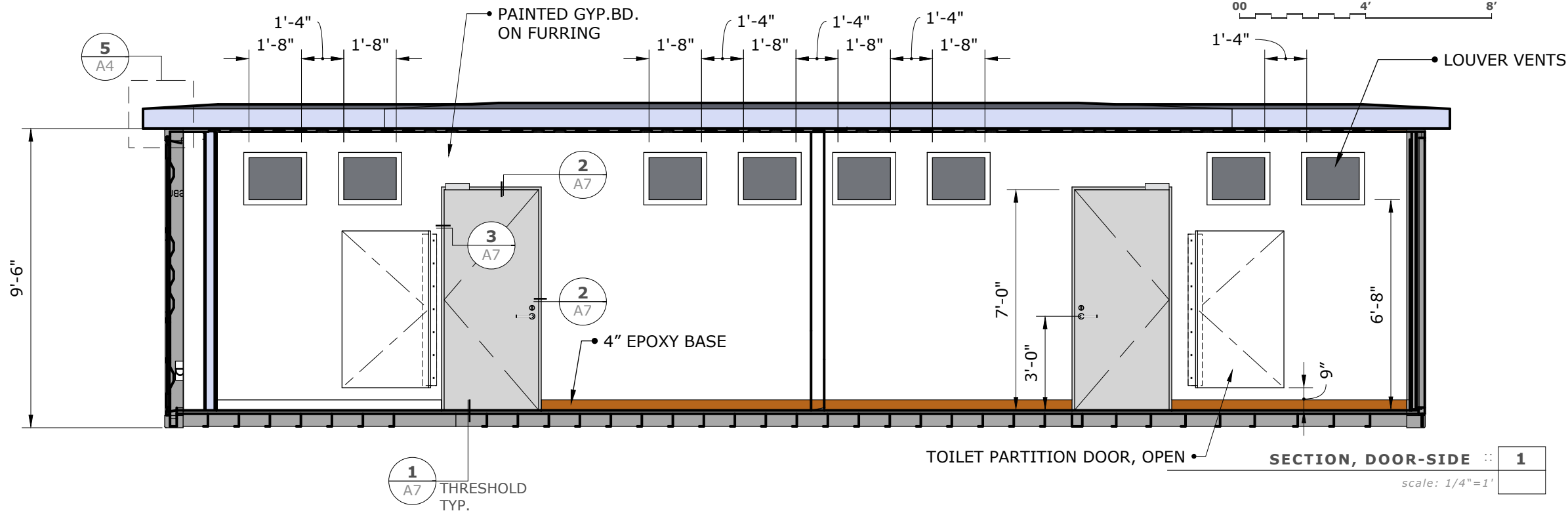
FRONT ELEVATION :: 2
scale: 1/4"=1'

REVIEWED BY:

 CONTAINER STORAGE COMPANY OF HAWAII, LTD. 2276 PAHOUNUI DR. HONOLULU, 96819 (808) 841-5555	DRAWN BY: DSF March 8, 2024	40' MODULAR BATHROOM PLAN AND FRONT ELEVATION
	SHEET A2 OF 8	



SECTION, FIXTURE - SIDE :: 2
 scale: 1/4"=1'



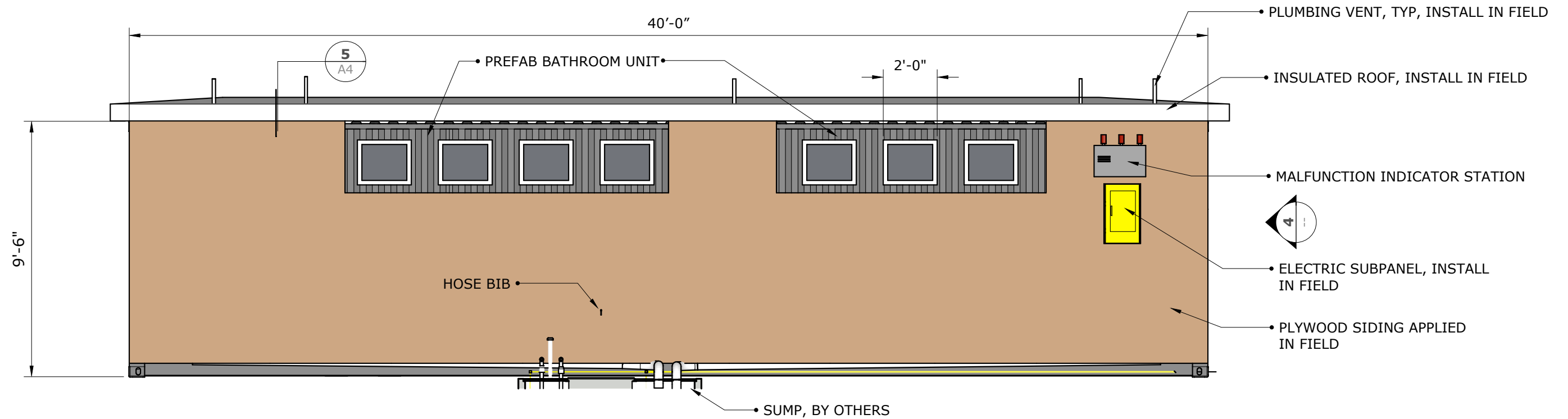
SECTION, DOOR-SIDE :: 1
 scale: 1/4"=1'

REVIEWED BY:

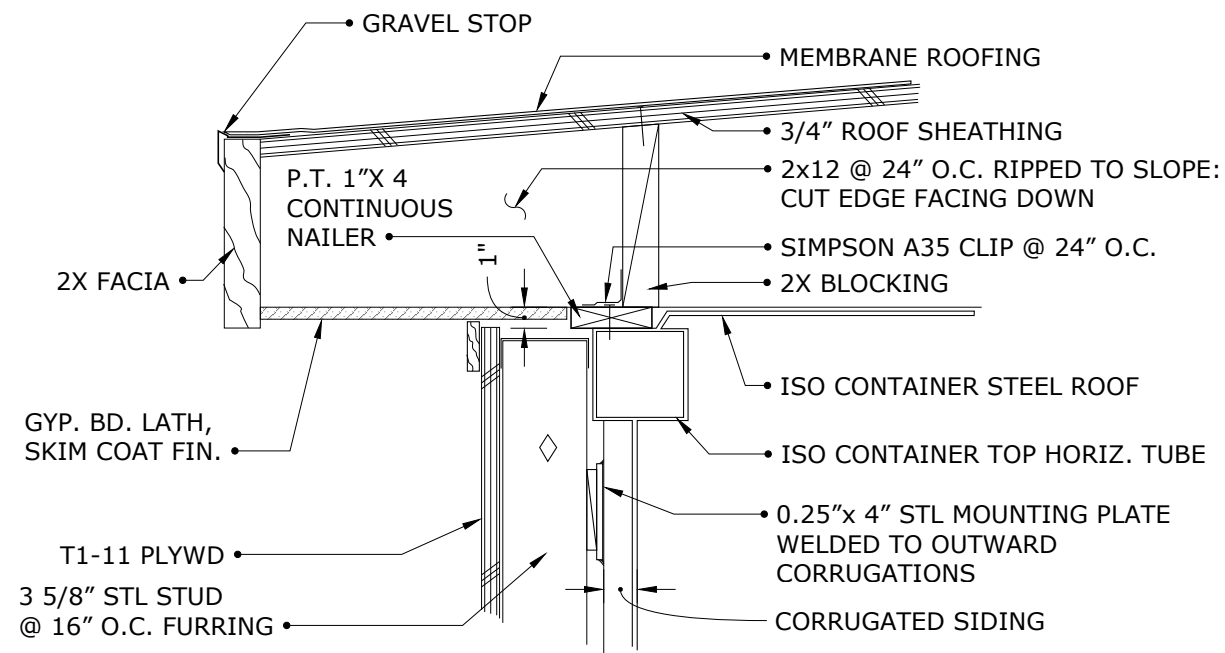
SHEET A3 OF 8

CSH CONTAINER STORAGE COMPANY OF HAWAII, LTD.
 2276 PAHOUNUI DR. HONOLULU, 96819
 (808) 841-5555

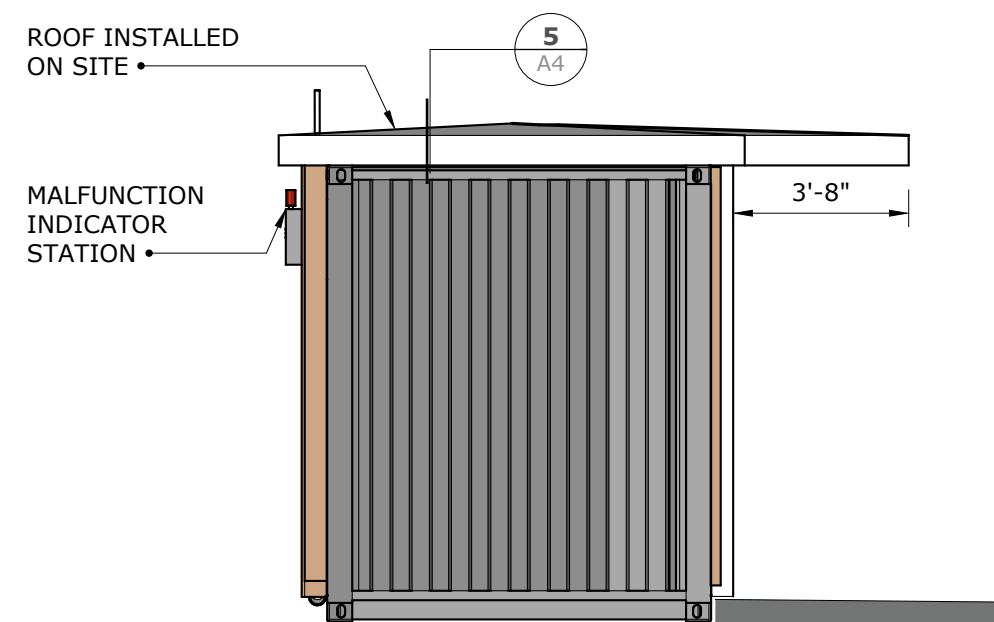
DRAWN BY: DSF	40' MODULAR BATHROOM
March 8, 2024	
SECTIONS	



REAR ELEVATION :: 1
 scale: 1/4"=1'



ROOF EAVE/ATTACHMENT :: 5
 scale: 1 1/2"=1'



END ELEVATION :: 4
 scale: 1/4"=1'

REVIEWED BY:

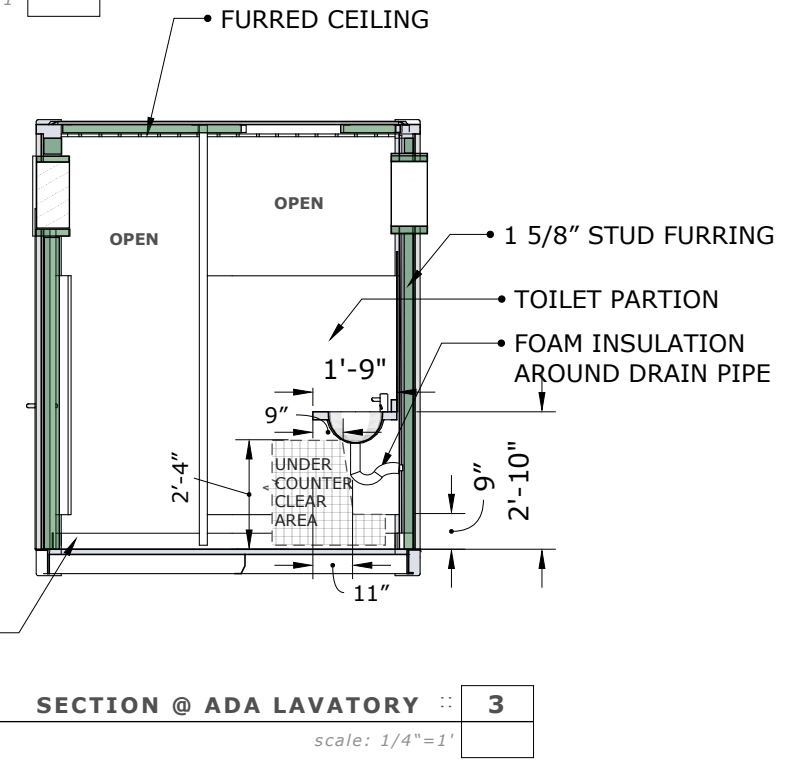
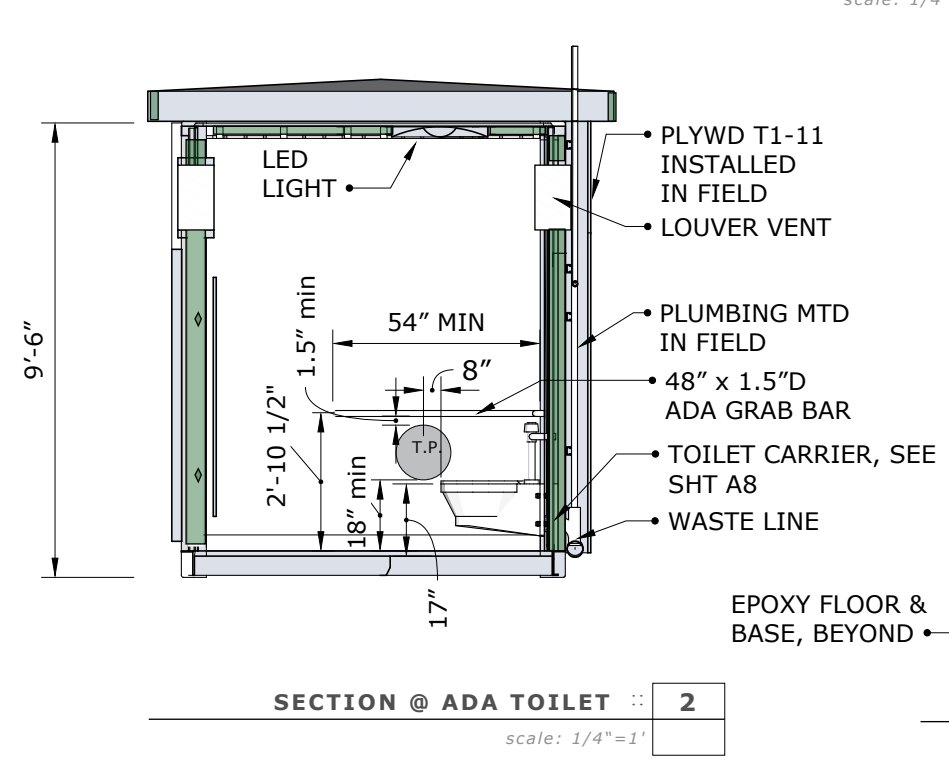
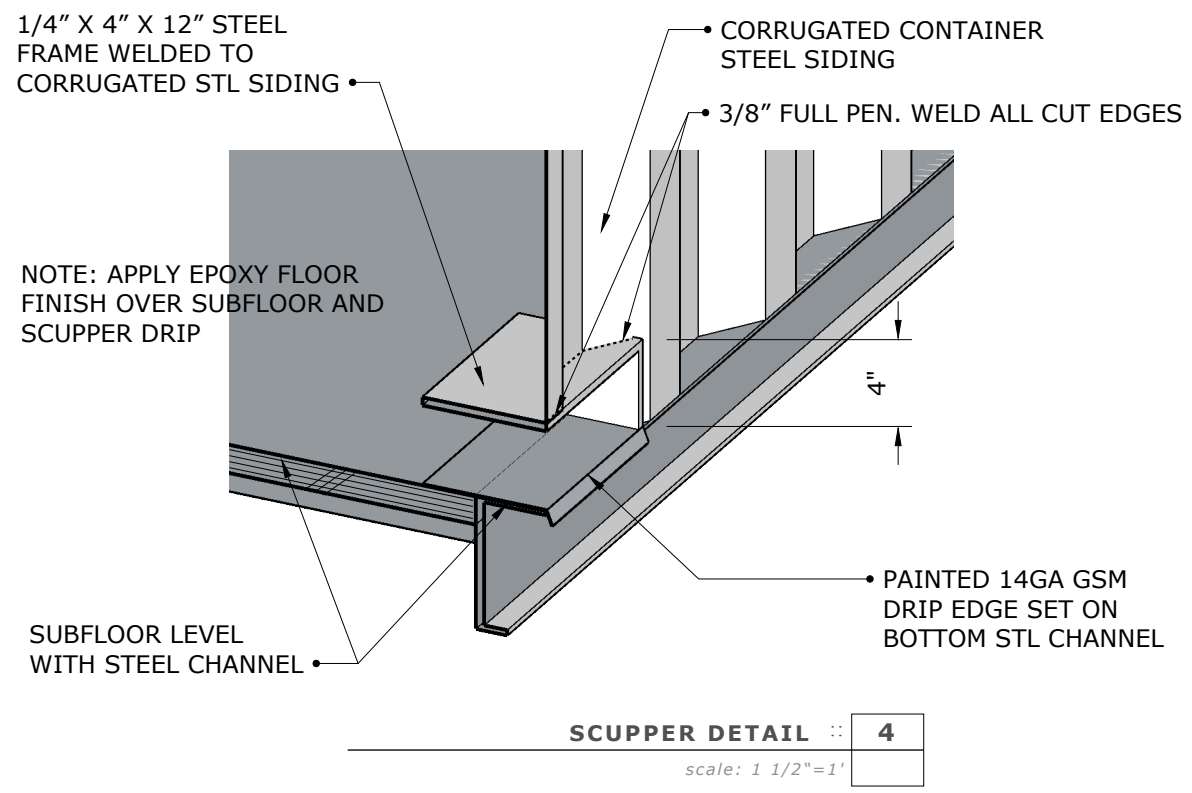
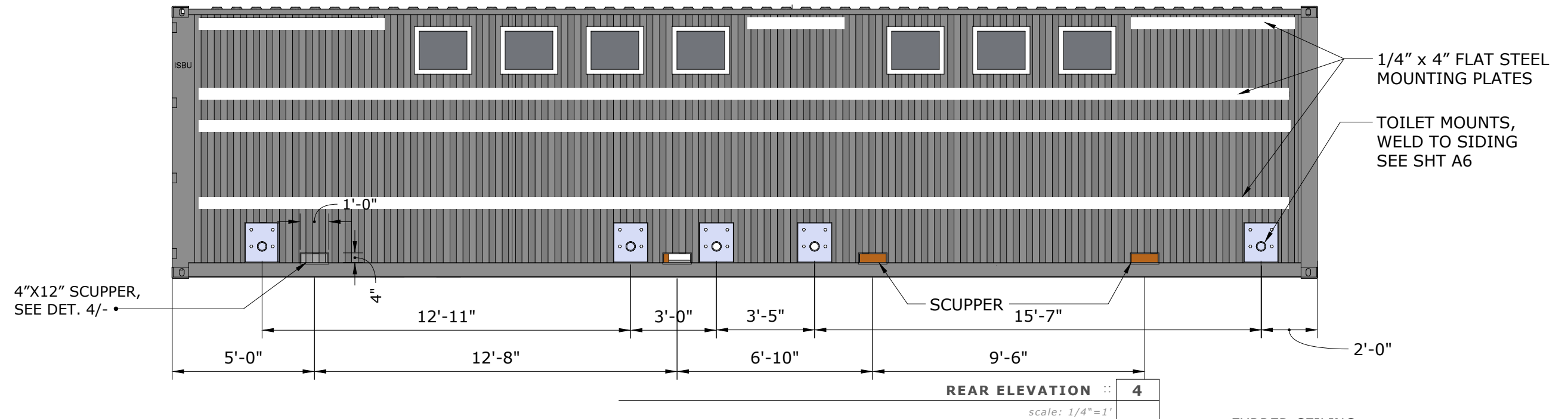


**CONTAINER STORAGE
 COMPANY OF HAWAII, LTD**
 2276 PAHOUNUI DR. HONOLULU, 96819
 (808) 841-5555

DRAWN BY: DSF
 March 8, 2024

40' MODULAR BATHROOM

EXTERIOR FINISHES



REVIEWED BY: